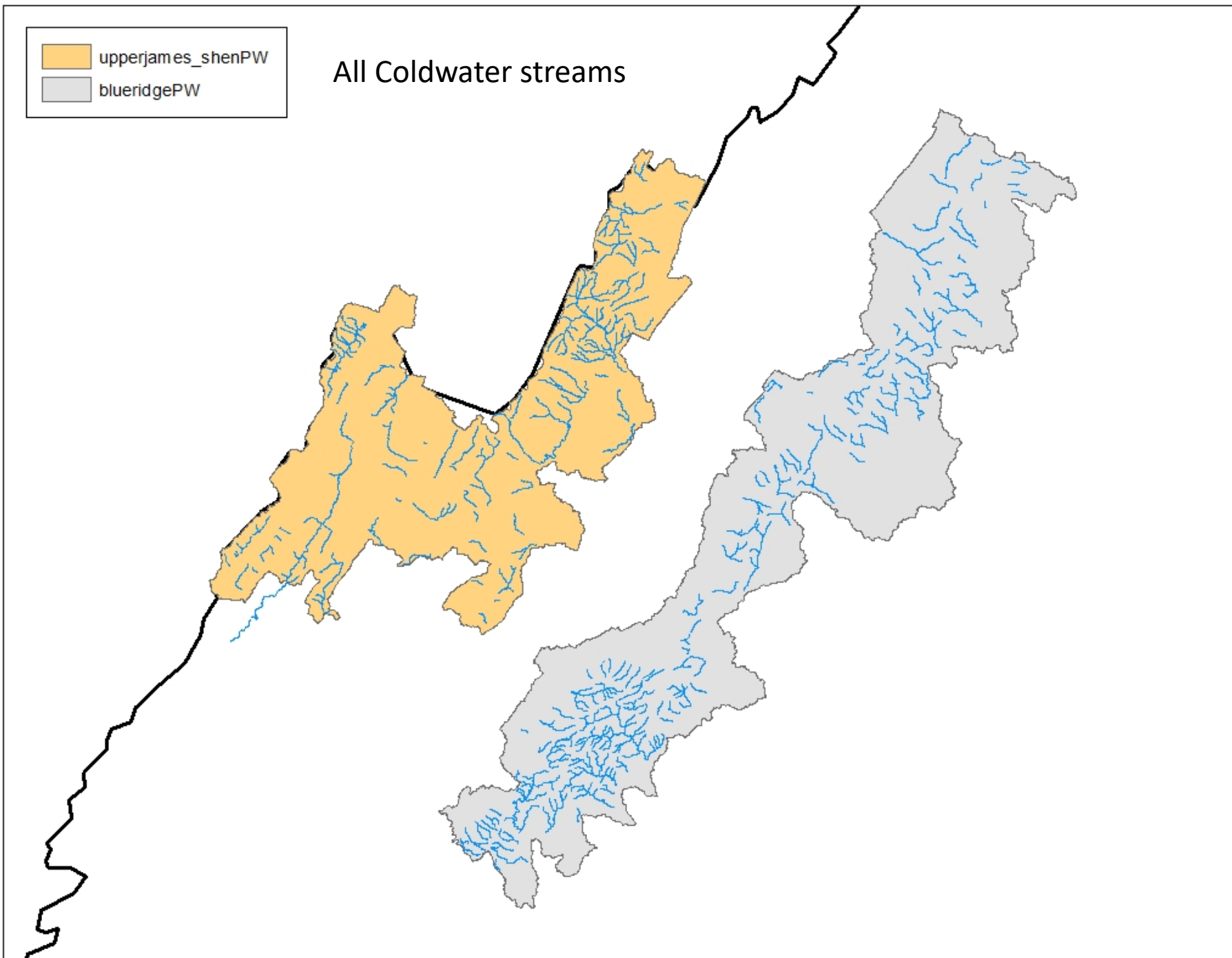
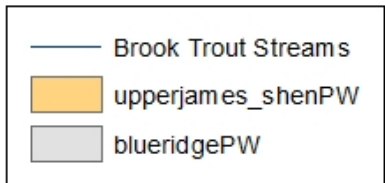
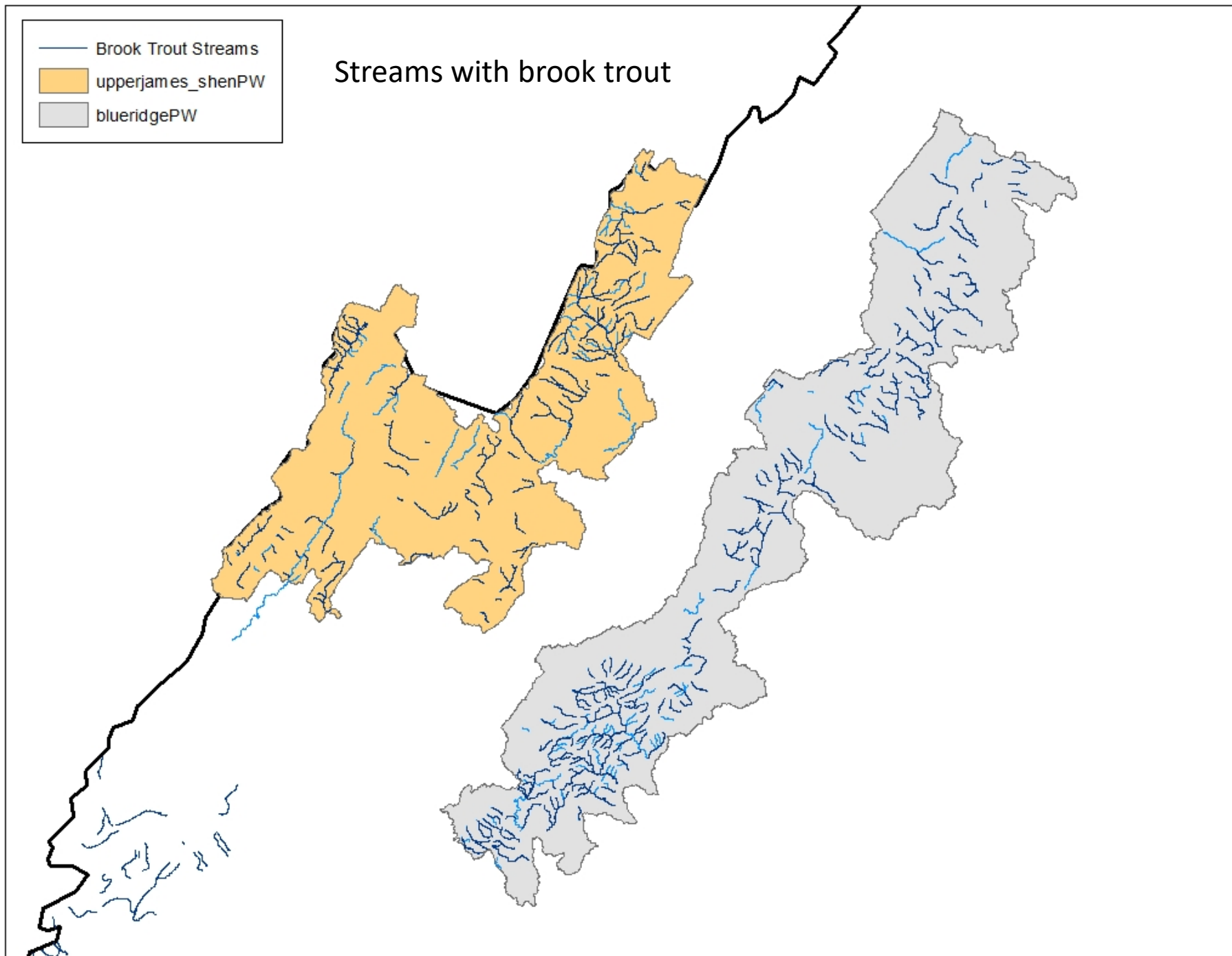


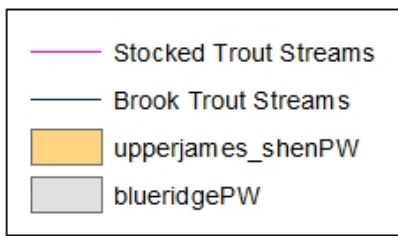
All Coldwater streams



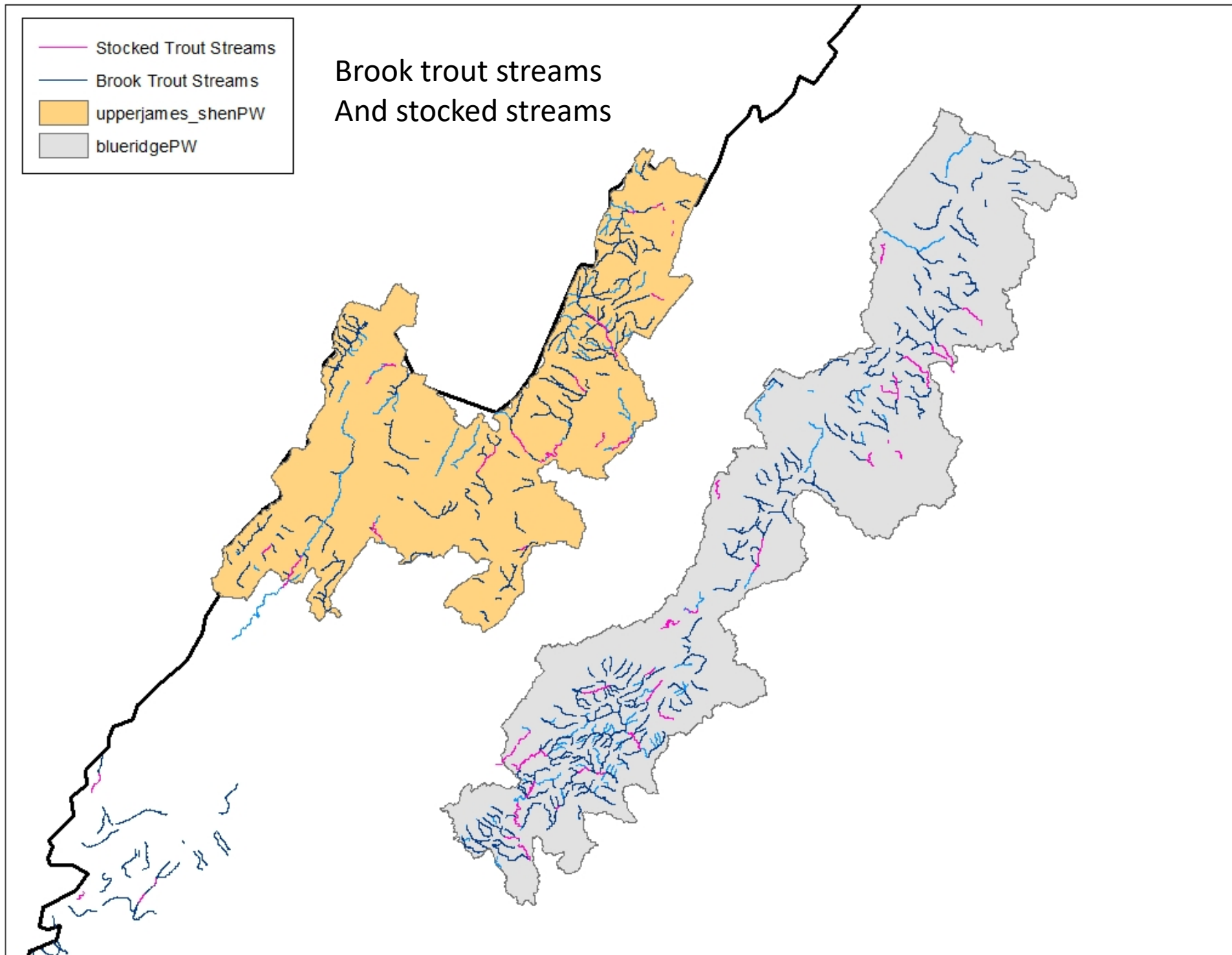


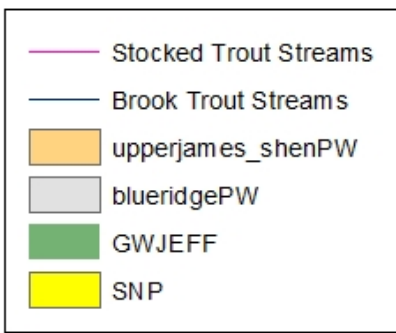
Streams with brook trout



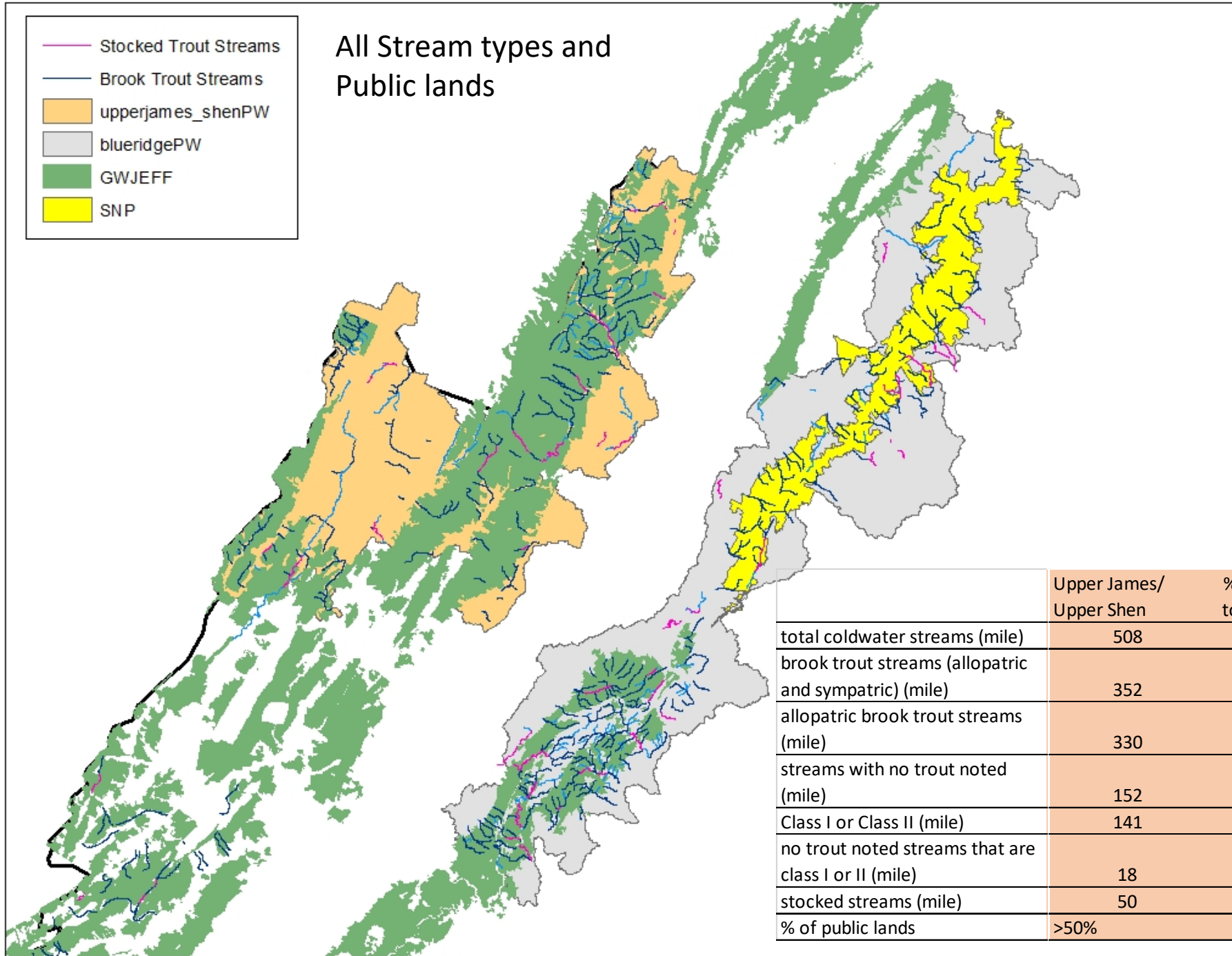


Brook trout streams And stocked streams





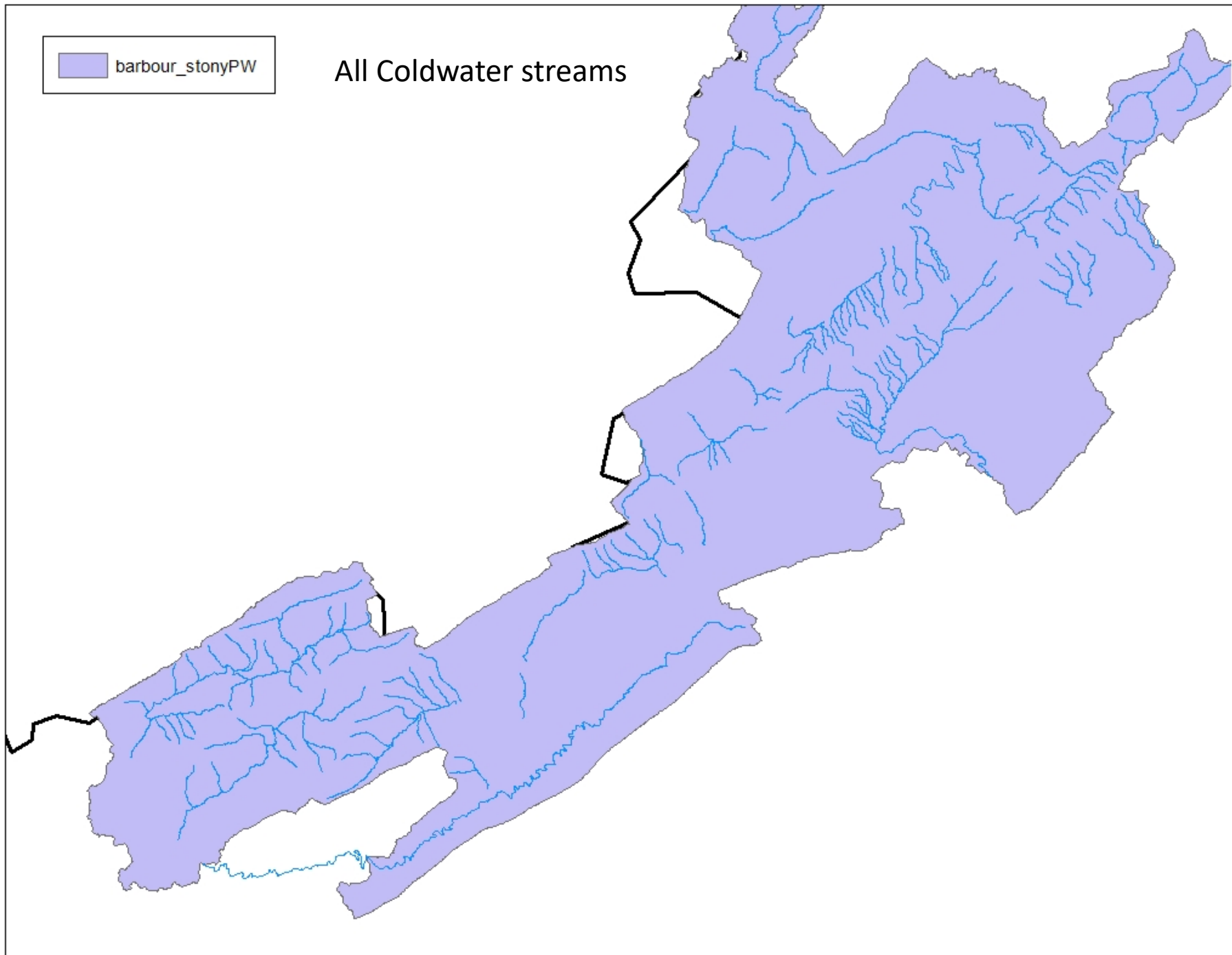
All Stream types and Public lands

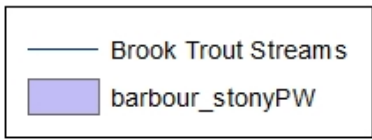


	Upper James/ Upper Shen	% of total	Blue Ridge	% of total
total coldwater streams (mile)	508		647	
brook trout streams (allopatric and sympatric) (mile)	352	69	518	80
allopatric brook trout streams (mile)	330	65	473	73
streams with no trout noted (mile)	152		115	
Class I or Class II (mile)	141		482	
no trout noted streams that are class I or II (mile)	18		52	
stocked streams (mile)	50		95	
% of public lands	>50%		~50%	

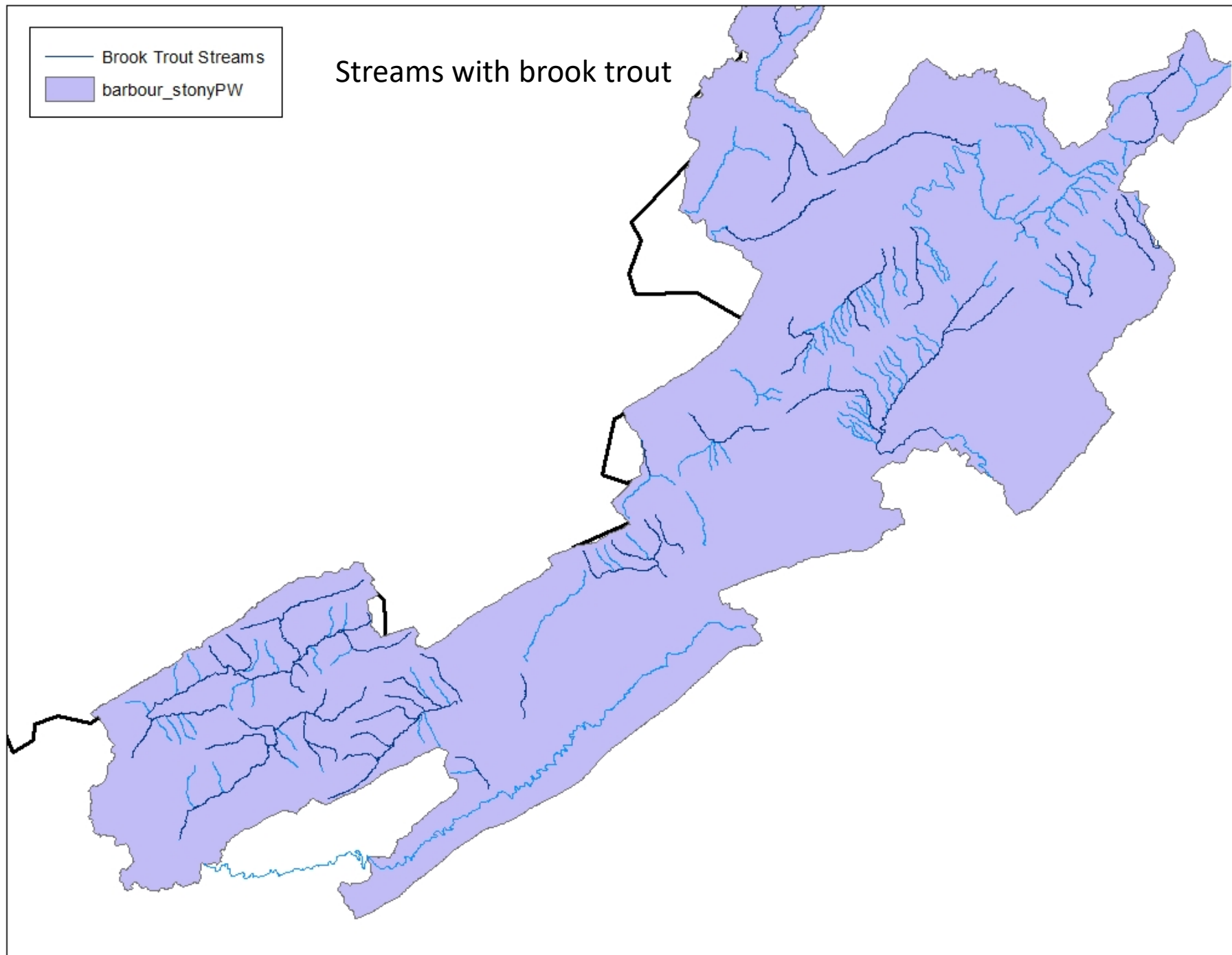
barbour_stonyPW

All Coldwater streams



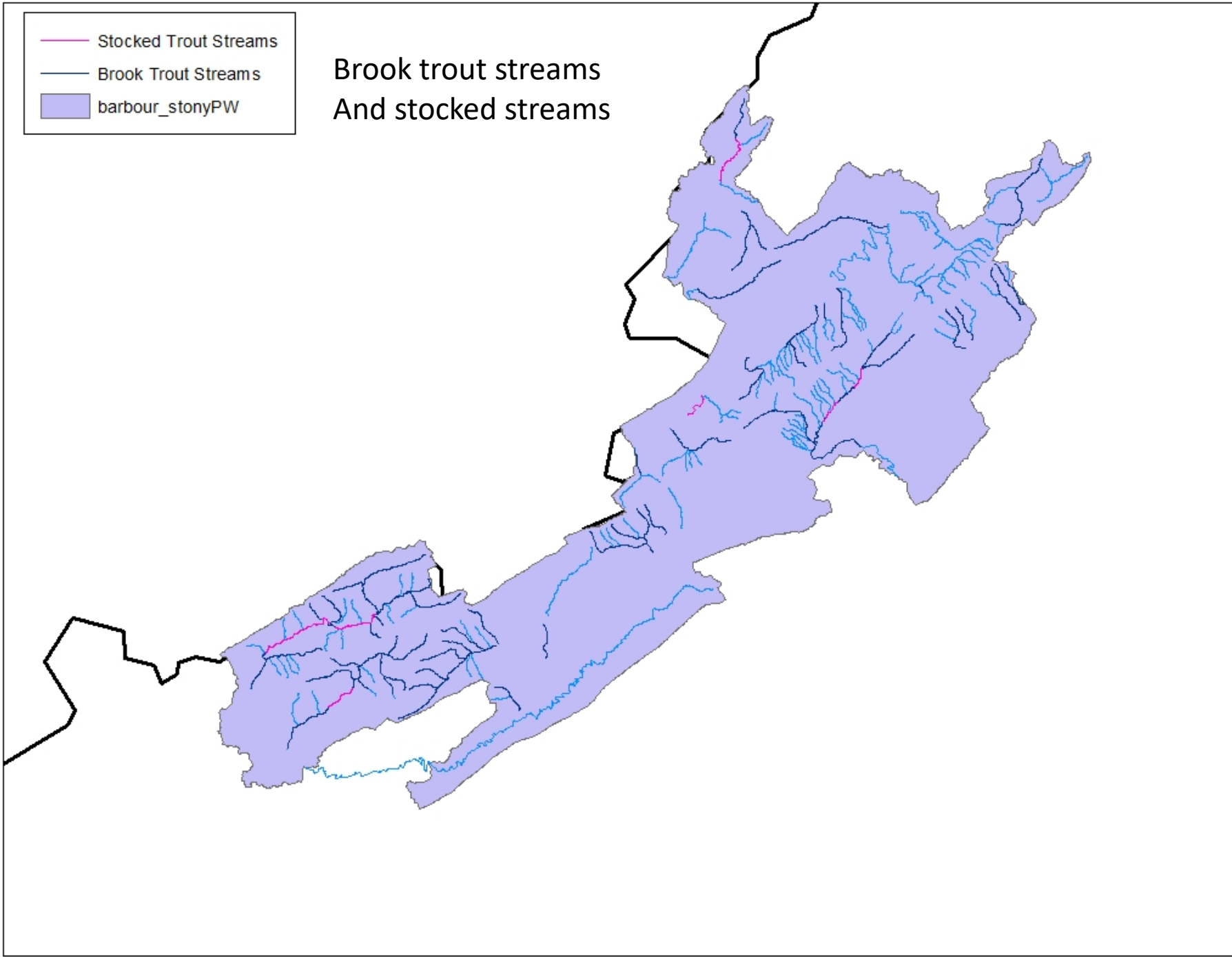


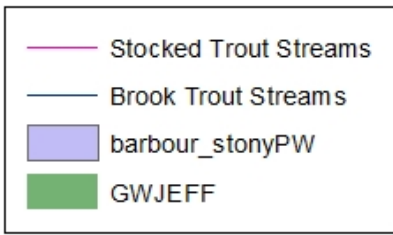
Streams with brook trout



- Stocked Trout Streams
- Brook Trout Streams
- barbour_stonyPW

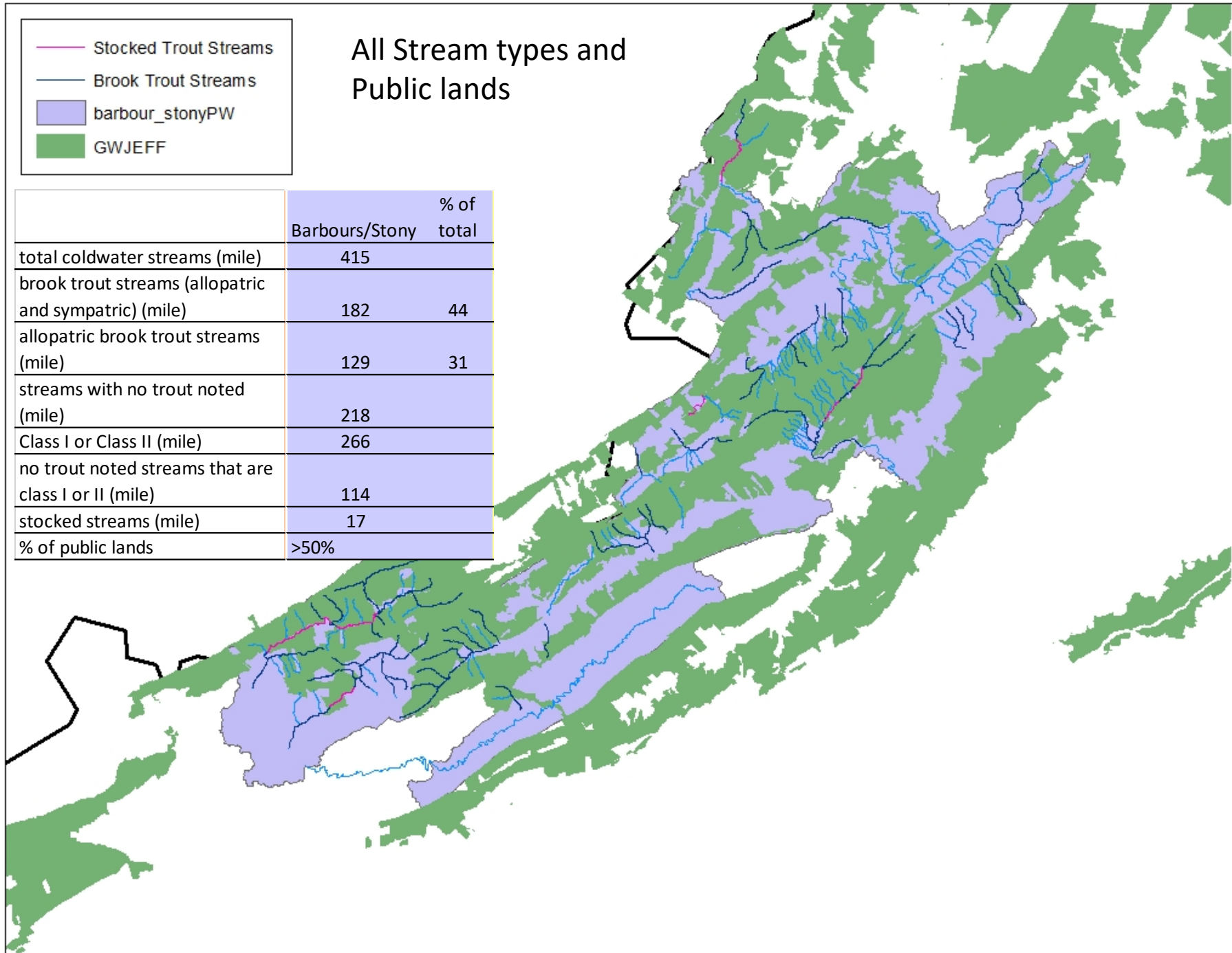
Brook trout streams And stocked streams



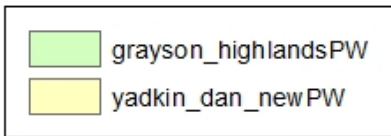
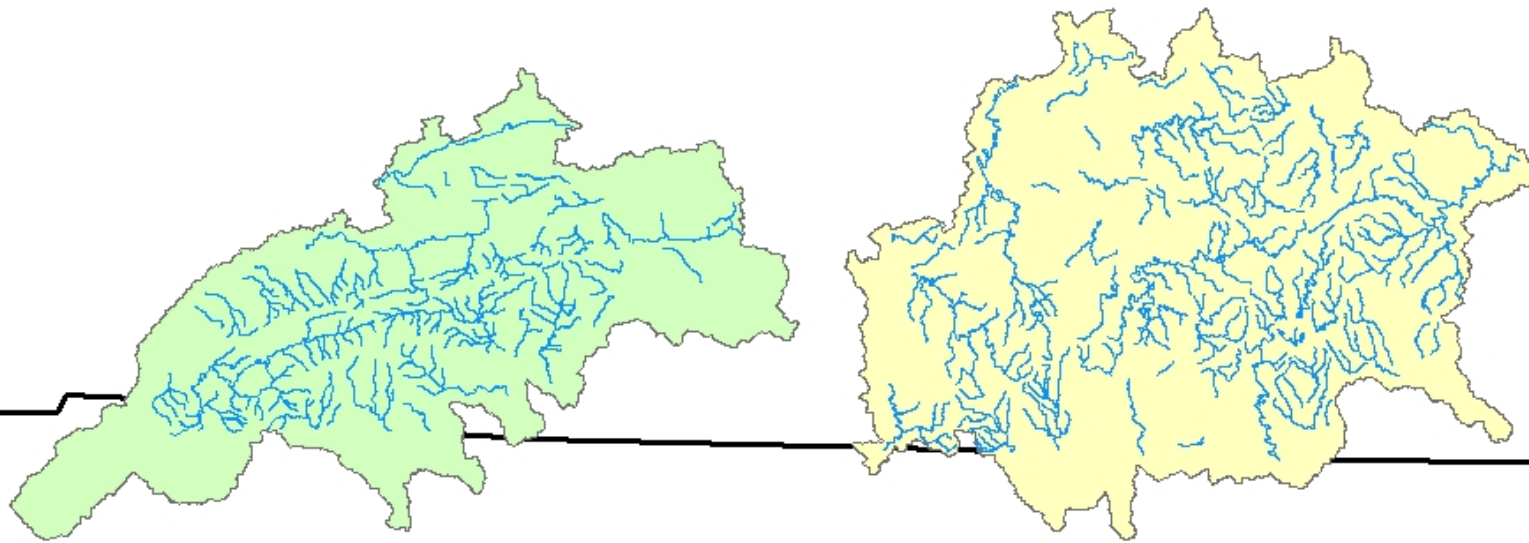


All Stream types and Public lands

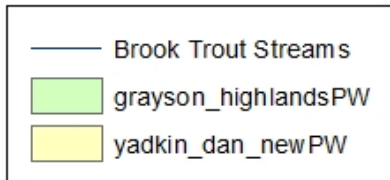
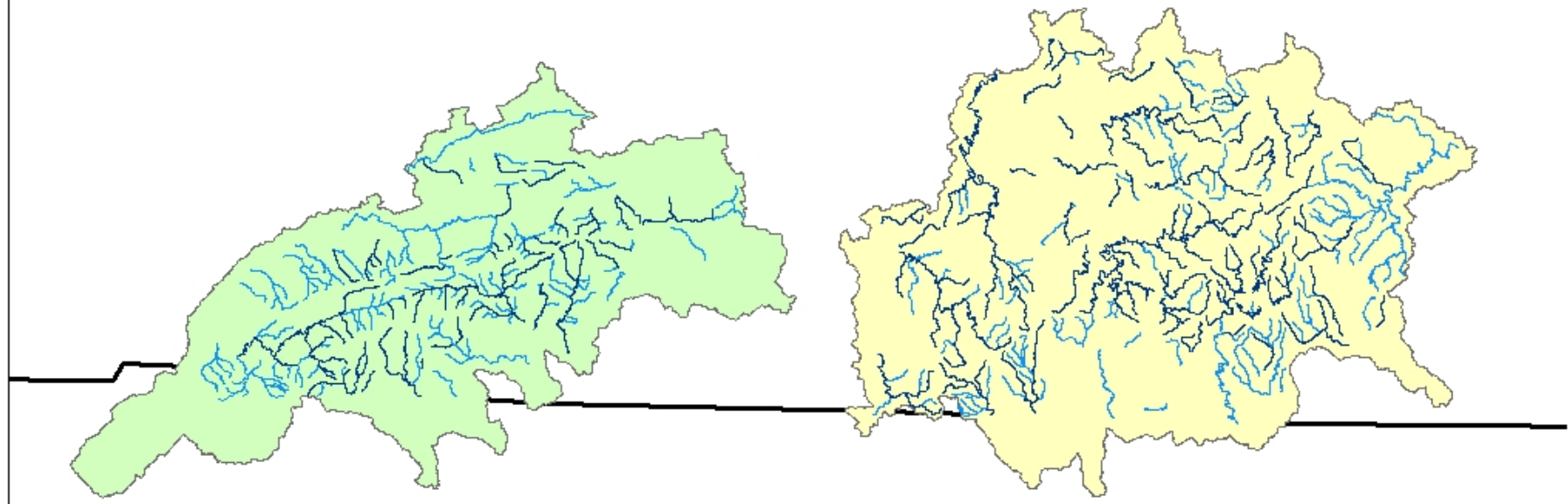
	Barbours/Stony	% of total
total coldwater streams (mile)	415	
brook trout streams (allopatric and sympatric) (mile)	182	44
allopatric brook trout streams (mile)	129	31
streams with no trout noted (mile)	218	
Class I or Class II (mile)	266	
no trout noted streams that are class I or II (mile)	114	
stocked streams (mile)	17	
% of public lands	>50%	



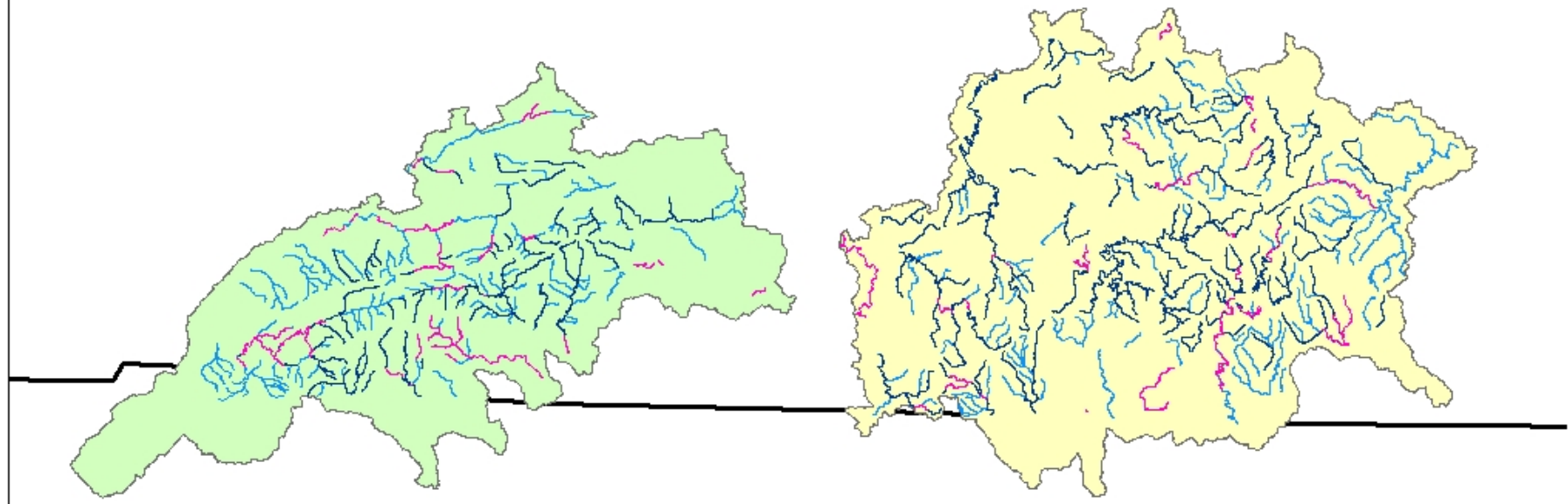
All Coldwater streams



Streams with brook trout

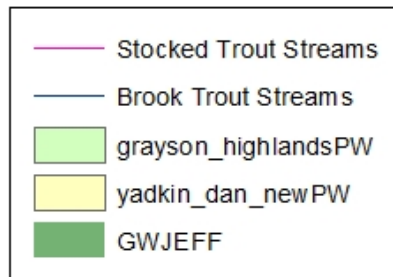
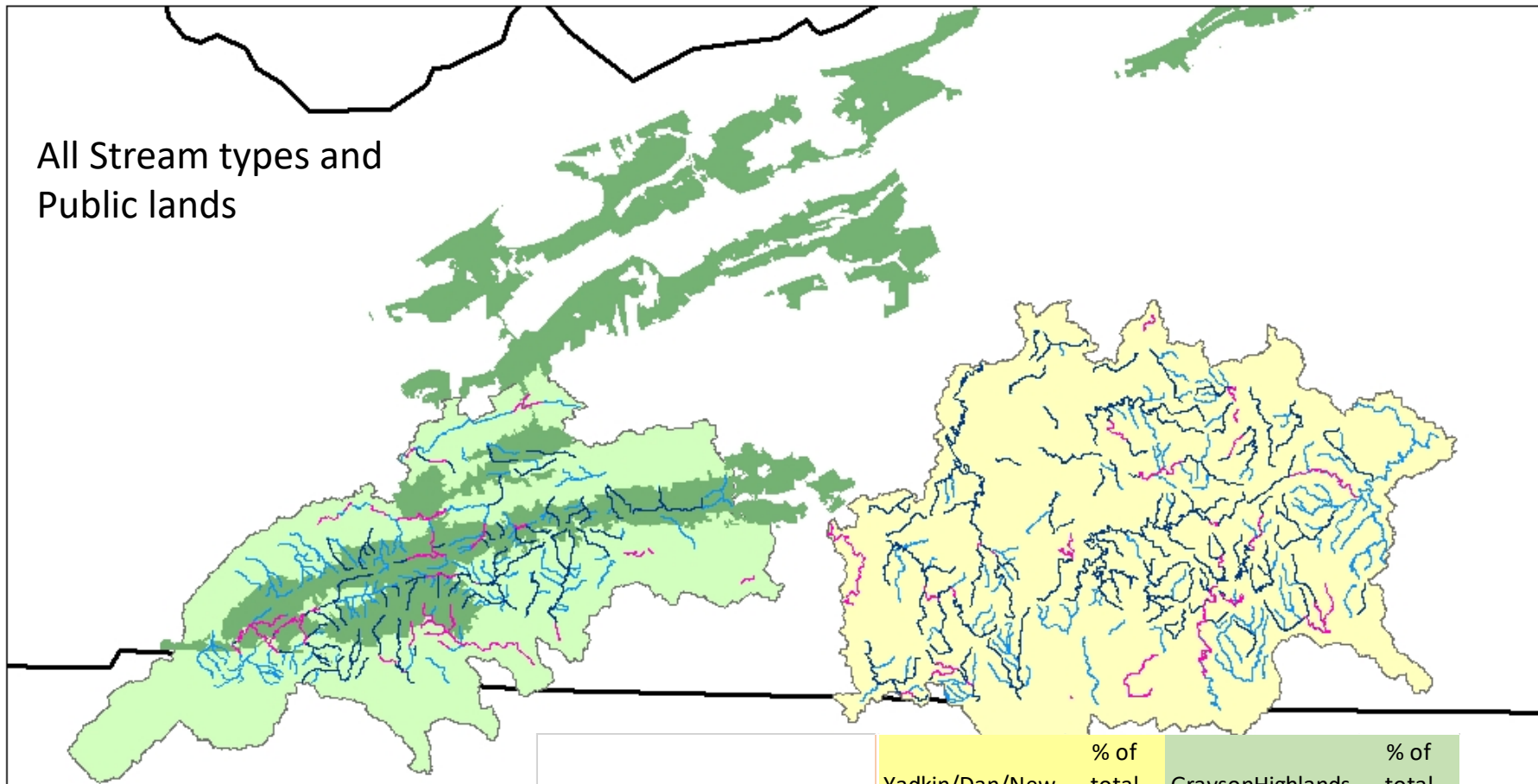


Brook trout streams
And stocked streams



- Stocked Trout Streams
- Brook Trout Streams
- grayson_highlandsPW
- yadkin_dan_newPW

All Stream types and Public lands



	Yadkin/Dan/New	% of total	GraysonHighlands	% of total
total coldwater streams (mile)	826		468	
brook trout streams (allopatric and sympatric) (mile)	511	62	200	43
allopatric brook trout streams (mile)	262	32	60	13
streams with no trout noted (mile)	253		140	
Class I or Class II (mile)	300		247	
no trout noted streams that are class I or II (mile)	56		62	
stocked streams (mile)	97		80	
% of public lands	none		<50%	

Priority water steps

Characterize ecological significant areas of native and wild trout using agency and TU data sets

for VA we have said focus on native brook trout and concentration of habitat by geo political and cultural boundaries rather than just watershed boundaries

Next step is to refine areas by looking for:

overlap and commonalities with state and federal agency to inform priority water selections

Is there timely conservation opportunity for TU in the identified areas?

Will our work there add significant value to the resource by increase pace, scale or quality of conservation outcomes?

Will our work there resonant with communities and partners in those areas?

End Products

Shapefile of our priority areas

Priority Waters overview

What are the Priority Waters in your state?

What is the scientific rationale for choosing these as Priority Waters?

What native trout and salmon portfolio elements are we seeking to preserve, reestablish, or enhance?

What do we know about current or future impacts of climate change to these waters?

What are the conservation and restoration opportunities in these waters? What value will TU add—why is TU needed on these waters?

Resonance and Engagement

Who are some of the key partners we are currently working with on PWs in your state? How do our goals align?

What interests and values of new partners, underrepresented populations, or at-risk communities do we seek to serve through Priority Waters work in your state? How will our work in these priority waters resonate with the objectives of these communities and individuals?

What opportunities will there be for members / supporters to engage?